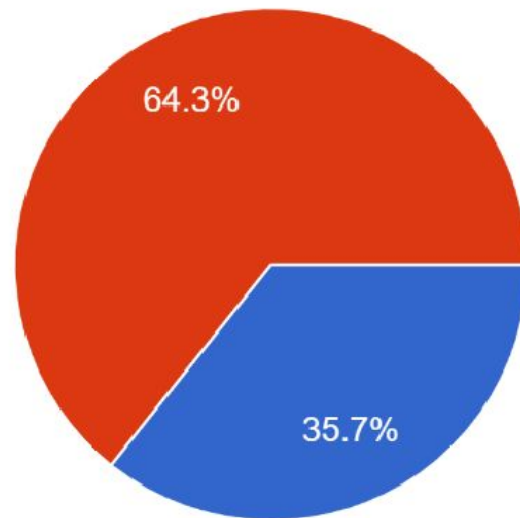


**Conceptual Proposal for
Restructuring the
A&S Senate
&
Shared Governance at
Stony Brook University**

**Presented to the A&S Senate
October 21, 2024**

In the Spring of 2022, presentations on recommendations from the Constitutional Revision Working Group were presented, and this past Spring the A&...wing models would you be interested in exploring?

28 responses



- Model 1: University Senate with Divisional Council/Assemblies (sometimes referred to as unicameral)
- Model 3: University Senate with Academic Senate and (with the proposed resolution) Professional Senate (sometimes referred to as multicameral)



Current shared governance structure consists of a single University Senate and ancillary shared governance groups.

University Senate

Major Governance Units (Senates)

Professional Senate

Student Governments (USG & GSO)

**Option 3: Consolidation of
the MGUs into a single
Academic Senate within the
University Senate.**

Option 3: University Senate
comprised of an Academic
Senate, a Professional Senate
and Student Government Reps..

University Senate

Academic Senate

Professional
Senate

Student
Governments
(USG & GSO)

The Academic Senate would meet regular with the Provost(s) and focus on areas of the academic mission as outlined within the SUNY BOT Policies.

Provost

Academic Senate
Executive
Committee

Standing
Committees

Senators





Academic Senate Executive
Committee

Academic Senate Executive
Committee would be comprised
of the Officers, Standing Comm.
Chairs and elected reps.

President

Vice Presidents

Standing Comm.
Chairs & Elect.
Reps.

Secretary



Each Academic Department or Program within each college, school or division would receive a single Departmental Senator.

Academic Senate Senators

CAS

COB

CEAS

SC&J

SOMAS

LIB

SOM

SDM

SON

SHP

SSW



The Academic related Standing Committees (Affiliate Senates/MGUs) would be centralized, and sub-committees formed, where appropriate. Former Univ. Sen. standing committee Professional and Student membership would be unchanged.

Academic Standing Committees

AJC

CASA

FRRC

FRRPC

P&T

Curr.

Research

SCEDIT

SPD

UGC

GC

PTC-J

Sub-Com
m.

PTC-S

Sub-Com
m.

HSC



Within Option 3, the University Senate would continue to meet regularly with the President; the Provost would be invited but not req. to report to the University Senate.

University President

University Senate Exec. Committee

Standing Committees

Senators

Equal Representation of Senators At-Large would be drawn from both the Academic and Professional Senates with Student Senators rep. percentages adjusted.

University Senate
Senators

Academic Senate

Professional
Senate

Student
Governments
(USG & GSO)

Standing Committees whose work spans the University would remain within the University Senate with current membership levels as per the Bylaws.

University Senate Standing Committees

Capra

Admin. Review

Quality of Life

Inter. Athletics

EIAD

LSRC

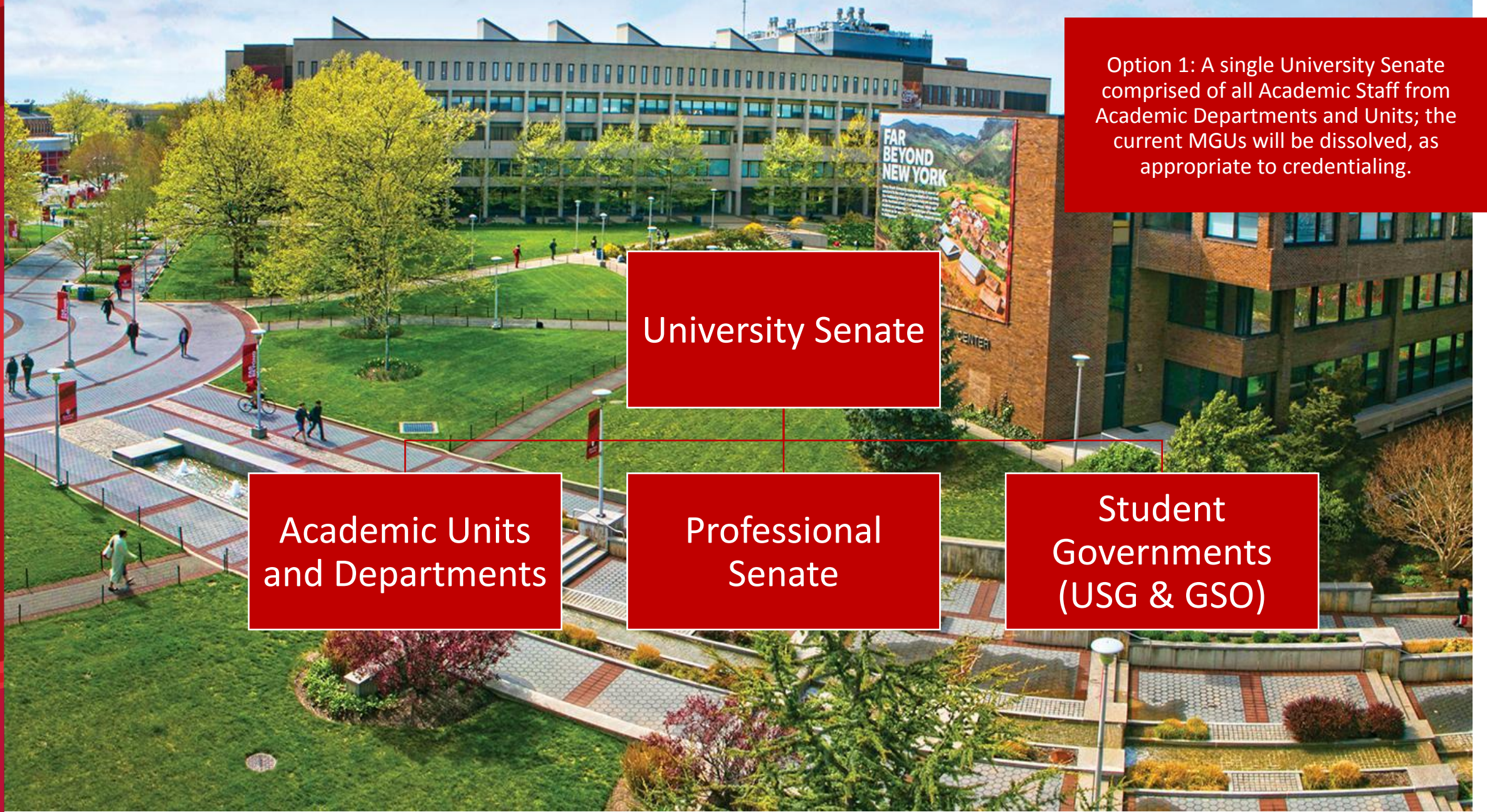
Student Life

University Affairs

University Environ.

Discussion

**Option 1: Dissolution of the
MGUs and the
consolidation under/within
the University Senate.**



Option 1: A single University Senate comprised of all Academic Staff from Academic Departments and Units; the current MGUs will be dissolved, as appropriate to credentialing.

University Senate

Academic Units and Departments

Professional Senate

Student Governments (USG & GSO)

Within Option 1, the University Senate would continue to meet regularly with the Campus Administration.

University President

University Senate
Exec. Committee

Standing
Committees

Senators

University Senate Executive Committee would remain comprised of the Officers and elected reps.

University Senate Executive Committee

President

Vice Presidents

Elect. Reps.

Secretary/
Treasurer

Each Academic college, school or division would receive an equal number of Senators; individual MGUs would be dissolved, as appropriate to credentialing.

University Senate Senators

CAS

COB

CEAS

SC&J

SOMAS

LIB

SOM

SDM

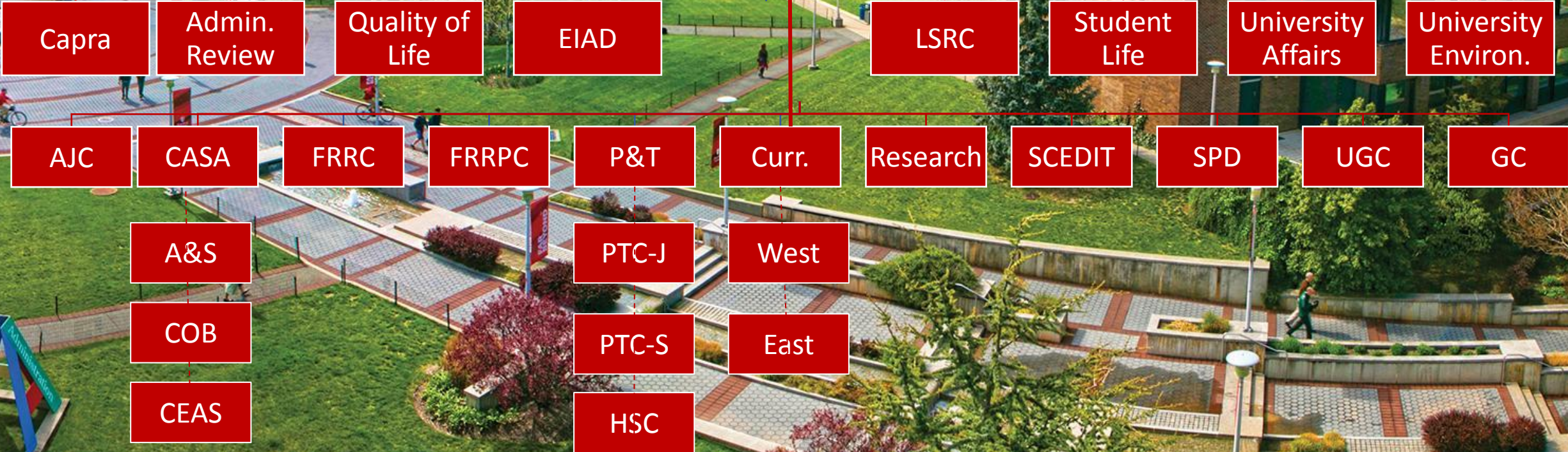
SON

SHP

SSW

Standing Committees from the MGUs will combine within the University Senate at current membership levels, sub-committees added where applicable.

University Senate Standing Committees



Discussion

Proposal(s) Summary

Proposed initial duration Fall 2025 thru Fall 2028 (**Note: Adjustments to the proposal can be accommodated as per accreditation and professional licensure reasons of individual schools, colleges and divisions; phased transition proposed.*)

Unchanged/Modifications

- University Senate would remain the umbrella organization in both options.
- Senate(s) Executive Committee(s) composition remains the same in both options.
- Allocation of Departmental Senators remains the same in both options.
- University Senate Standing Committees' Base Membership remains the same in both options.
- Professional allocation of representatives and on committees would be adjusted, see current University Senate Bylaws Proposal.
- Student allocation of representatives and on committees remains the same in both options.

Changes

- MGUs eliminated, return to Academic Units.
- Separate MGU/Senates consolidated in both options (development of joint college assemblies or councils encouraged)
- Move to centralized, direct elections and appointment processes.
- Some existing MGUs' Standing Committees would transfer in either option (where applicable), and sub-committee would be formed with existing members staying onboard in both options.
- Senator At-Large allocation would change in both options.
- Reporting structure to campus Admin. would change in both options.

Proposal(s) Summary Continued

Phased Transition Proposed

Phased Shared Governance Transition Timeline

- Fall 2024: A&S Senate Discussion and Vote
- 2024-2025 Academic Year: Proposal Voted Upon
- Summer 2025: Provisional Bylaws Drafted
- 2025-2026 Phase 1: West Campus Transfer/Consolidation, as applicable.
- 2026-2027 Phase 2: East Campus Transfer/Consolidation, as applicable.
- 2027-2028 Phase 3: Assessment and Voting on formal, permanent change; constitutional convention.