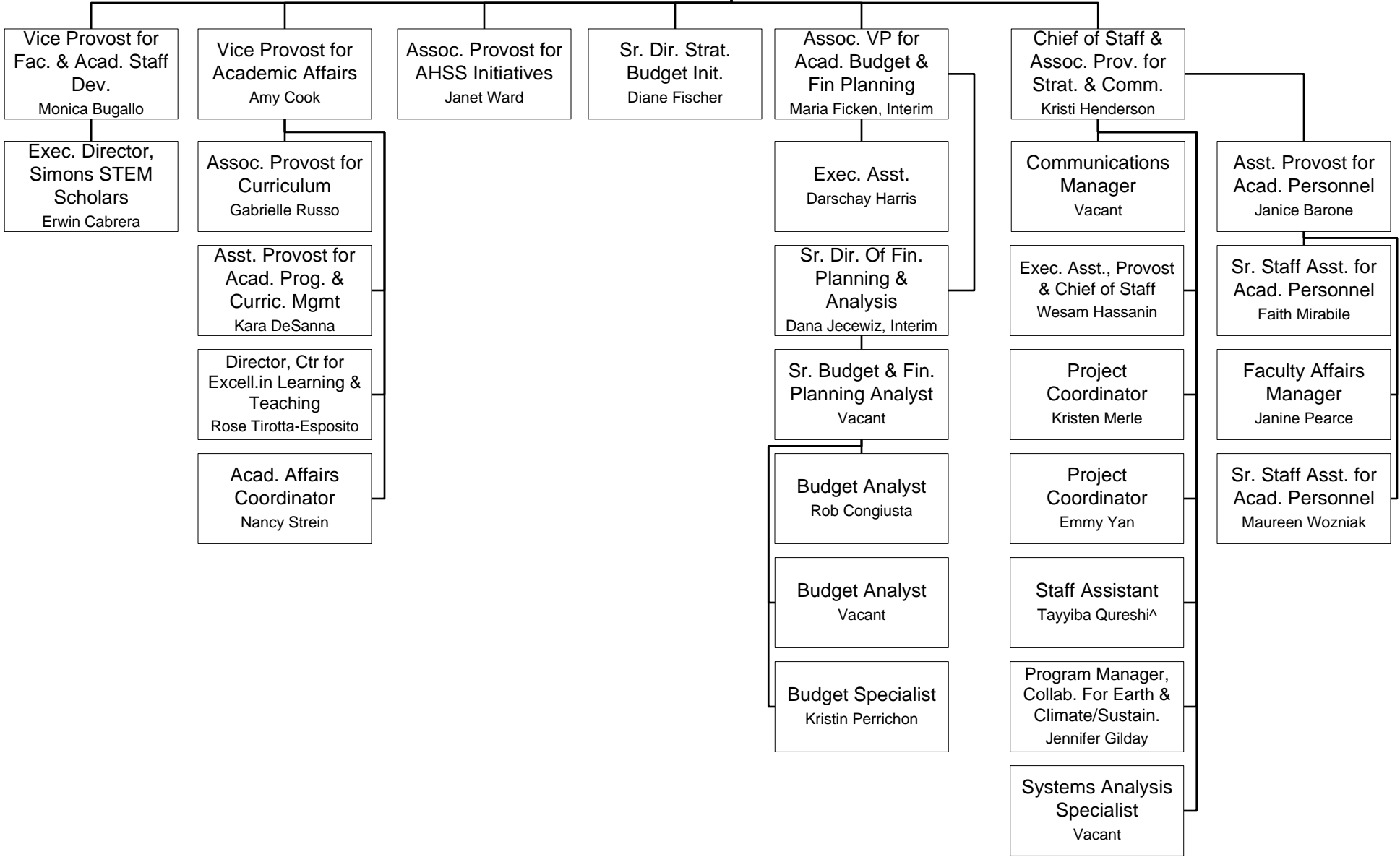


Provost & Exec VP for Academic Affairs
Carl Lejuez

Office of the Provost Org Structure



^ Currently serving as Interim Program Director for Pre-College Summer Programs

Provost Carl Lejuez is at the top of the organizational structure.

- Vice Provost for Faculty & Academic Staff Development, Monica Bugallo, reports directly to the Provost
 - Exec. Director, Simons STEM Scholars, Erwin Cabrera, reports directly to the VPFASD
- Vice Provost for Academic Affairs, Amy Cook, reports directly to the Provost
 - Associate Prov. for Curriculum, Gabrielle Russo, reports directly to the Vice Provost for Academic Affairs
 - Assistant Prov. for Acad. Program & Curriculum Management, Kara DeSanna, reports directly to the Vice Provost for Academic Affairs
 - Director, Center for Excellence in Learning & Teaching, Rose Tirota-Esposito, reports directly to the Vice Provost for Academic Affairs
 - Academic Affairs Coordinator, Nancy Strein, reports directly to the Vice Provost for Academic Affairs
- Senior Director of Strategic Budget Initiatives, Diane Fischer, reports directly to the Provost
- Associate Vice President for Academic Budget & Financial Planning, Maria Ficken, Interim, reports directly to the Provost
 - Senior Director of Financial Planning & Analysis, Dana Jecewiz, Interim reports directly to the AVP for ABFP
 - Senior Budget & Financial Planning Analyst, Vacant, reports directly to the Senior Director of FPA
 - Budget Generalist, Rob Congiusta, reports directly to the Senior BFP Analyst
 - Budget Generalist, Vacant, reports directly to the Senior BFP Analyst
 - Budget Specialist, Kristin Perrichon, reports directly to the Senior BFP Analyst
 - Executive Assistant, Darschay Harris, reports directly to the AVP for ABFP
- Chief of Staff & Assoc. Provost for Strategy & Comm, Kristi Henderson, reports directly to the Provost
 - Communications Manager, Vacant, reports directly to the CoS
 - Executive Assistant to the Provost & to the Chief of Staff, Wesam Hassanin, reports directly to the CoS
 - Project Coordinator, Kristen Merle, reports directly to the CoS
 - Project Coordinator, Emmy Yan, reports directly to the CoS
 - Staff Assistant, Tayyiba Qureshi, reports directly to CoS and supports Vice Prov, Acad. Affairs, and Vice Prov., Cont., Prof. & Exec. Ed.
 - Program Manager, Collab. for the Earth and Climate and Sustainability, Jennifer Gilday, reports directly to the CoS and supports Dir., Collab for the Earth and Assoc. Provost for Climate and Sustainability Programming
 - Systems Analysis Specialist, Vacant, reports directly to the CoS
 - Assistant Provost for Academic Personnel, Janice Barone, reports directly to the CoS
 - Sr Staff Assistant for Academic Personnel, Faith Mirabile, reports directly to the Assistant Provost for Academic Personnel
 - Faculty Affairs Manager, Janine Pearce, reports directly to the Assistant Provost for Academic Personnel
 - Sr Staff Assistant for Academic Personnel, Maureen Wozniak, reports directly to the Assistant Provost for Academic Personnel