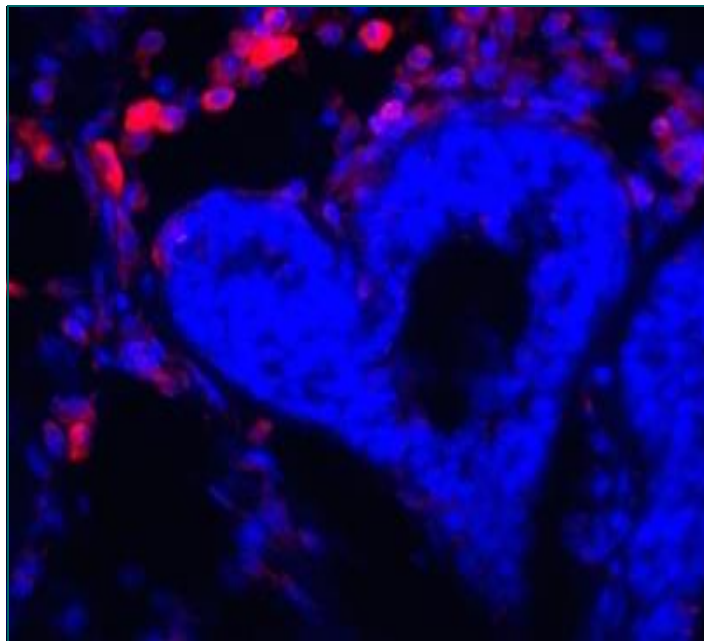


GRADUATE PROGRAM IN GENETICS

College of Arts & Sciences ♦ Stony Brook University

DOCTORAL DISSERTATION DEFENSE

Cancer cell CCR2 orchestrates escape from the
adaptive immune response



Miriam R. Fein

Advisor: Dr. Mikala Egeblad

November 30, 2016 ♦ 1:30 PM

Hawkins Conference Room, Wendt Building, Cold Spring Harbor
Laboratory

Stony Brook University ♦ Cold Spring Harbor Laboratory ♦ Brookhaven National Laboratory